



EXPLORATION OF DIFFERENT ACTIVE REGION HEATING MODELS

Zoran Mikić

Cooper Downs

Roberto Lionello

Predictive Science, Inc., San Diego, CA, USA

Jim Klimchuk

NASA Goddard Space Flight Center, Greenbelt, MD, USA

Amy Winebarger

NASA Marshall Space Flight Center, Huntsville, AL, USA

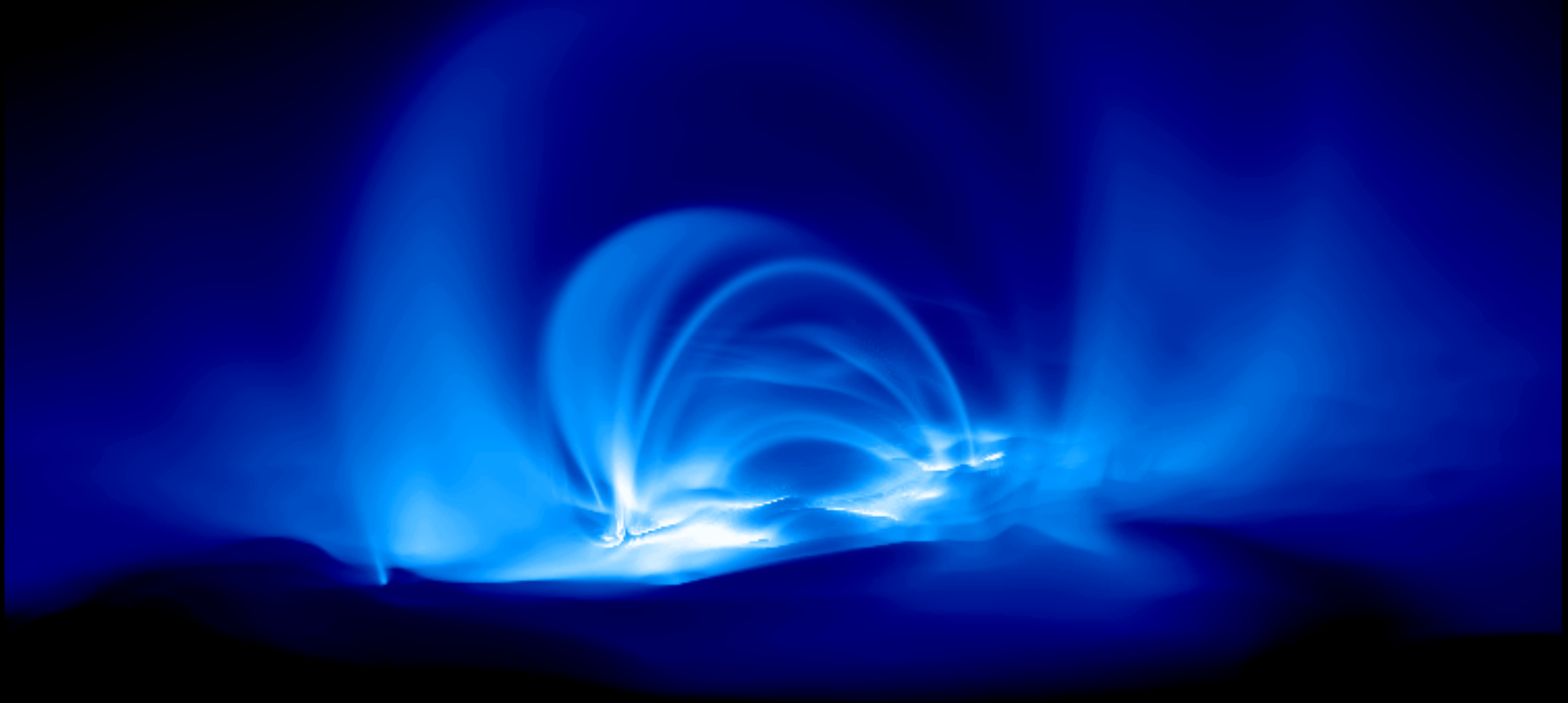
Fall AGU Meeting, Washington DC, December 10–14, 2018

Supported by NASA's HSR Program

Poster SH43F-3731 (Thursday, Dec. 13)

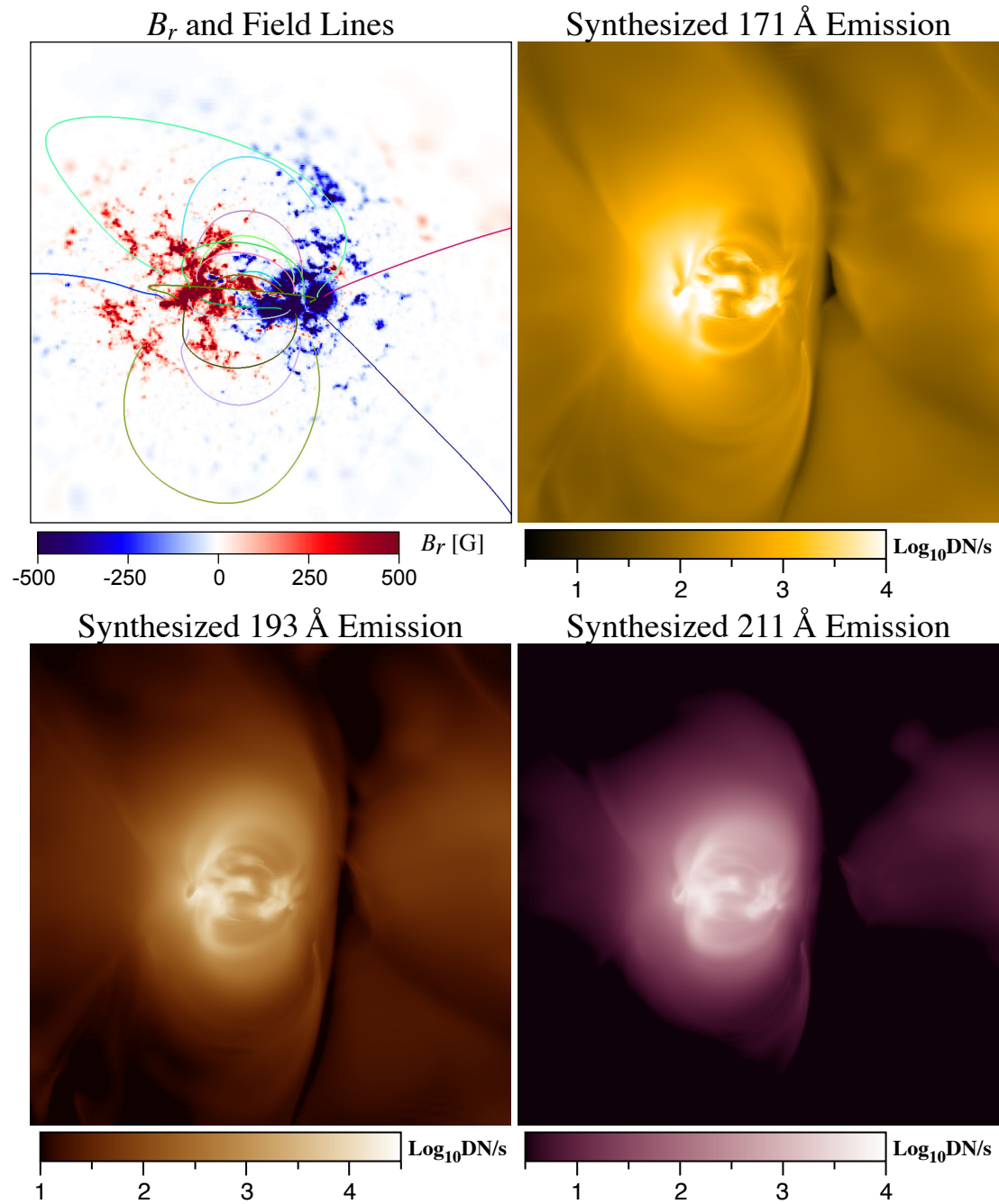


Simulated EIT171Å Emission from AR7986 (August 1996)



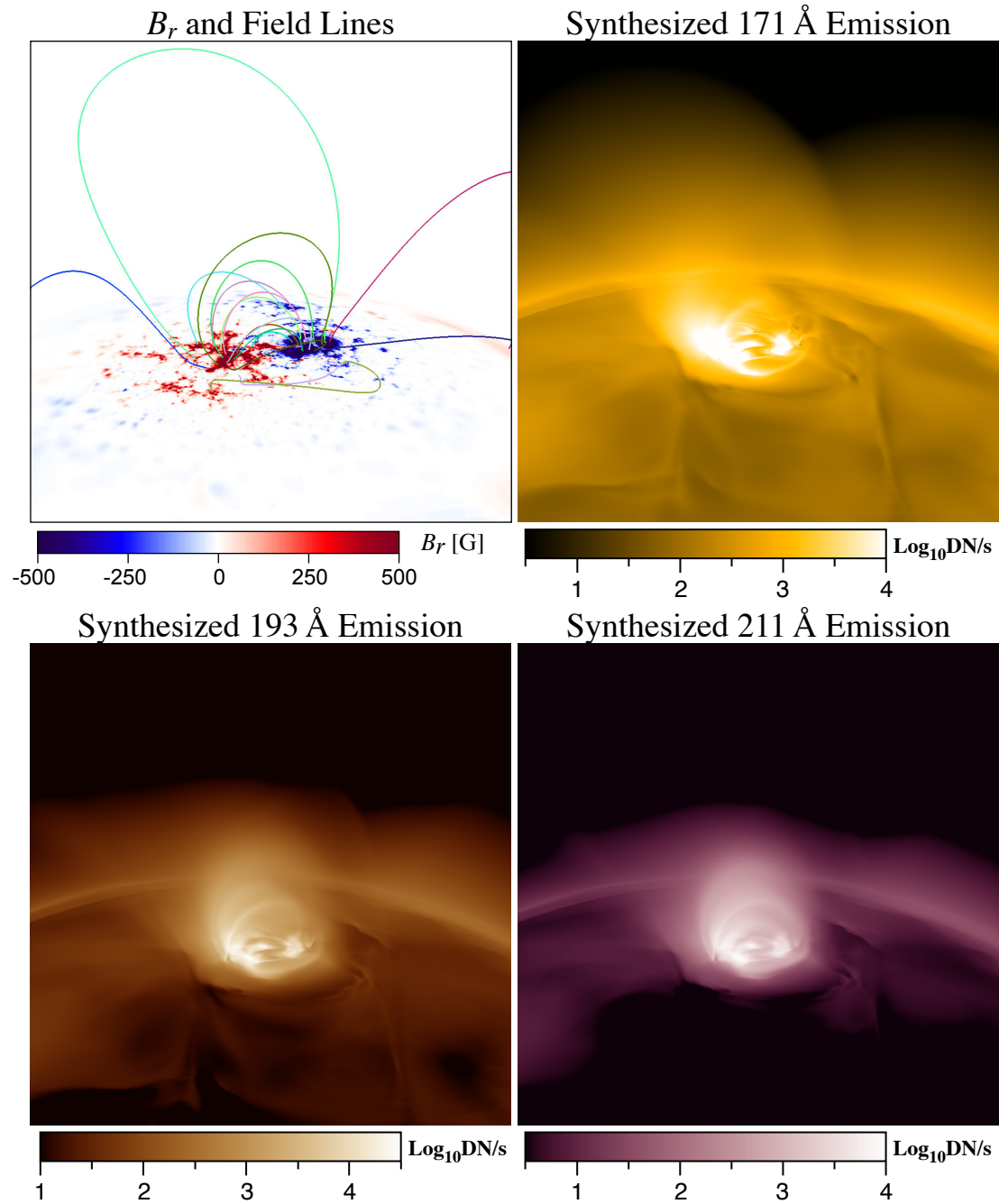
EUV Emission in AR11339 on November 8, 2011

Empirical Heating: Mok (Rappazzo-Velli), $H \propto B^{1.75} \rho^{0.125} / L^{0.75}$



EUV Emission in AR11339 on November 8, 2011

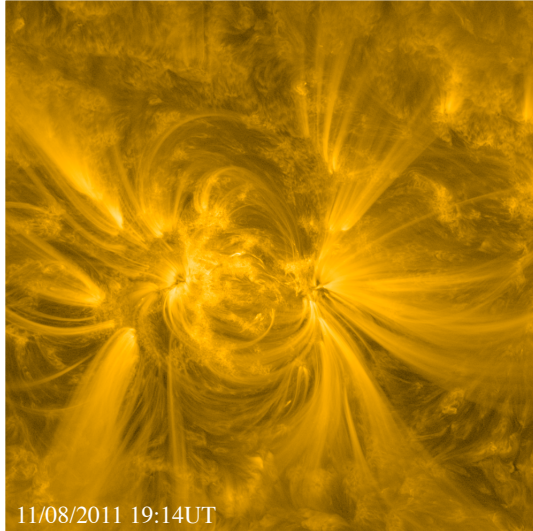
Empirical Heating: Mok (Rappazzo-Velli), $H \propto B^{1.75} \rho^{0.125} / L^{0.75}$



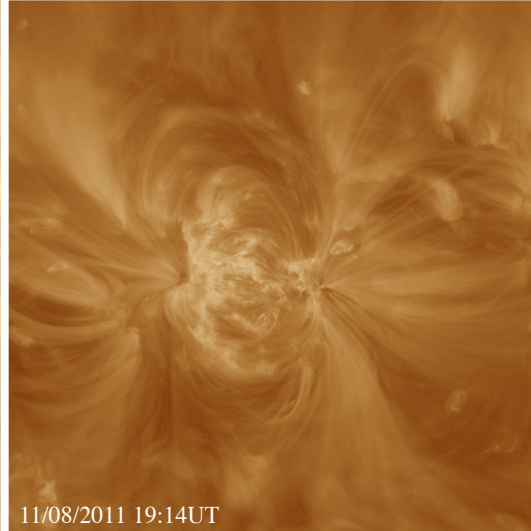
EUV Emission in AR11339 on November 8, 2011

Empirical Heating: PSI Standard Heating Version 2

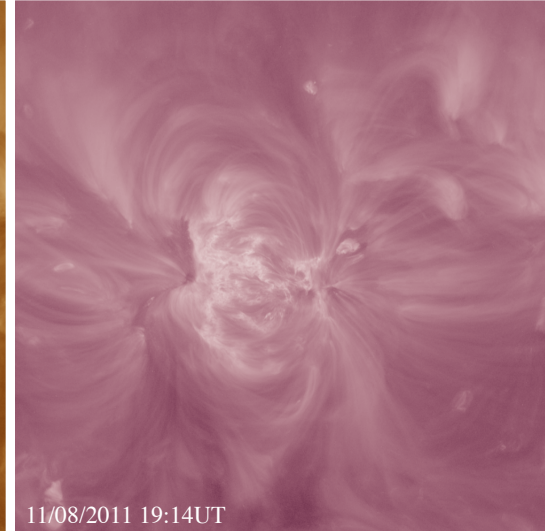
AIA 171 Å Emission



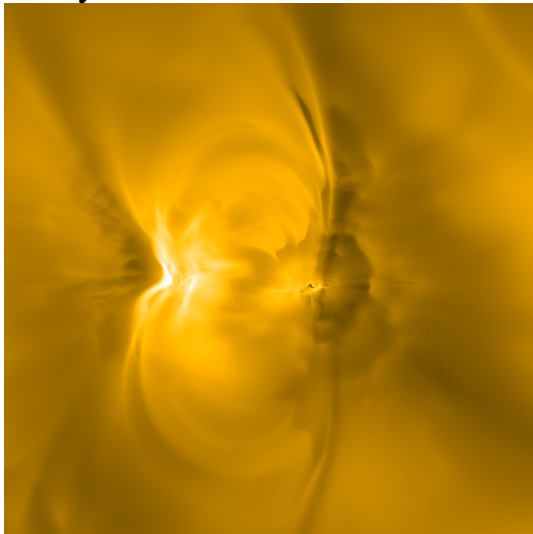
AIA 193 Å Emission



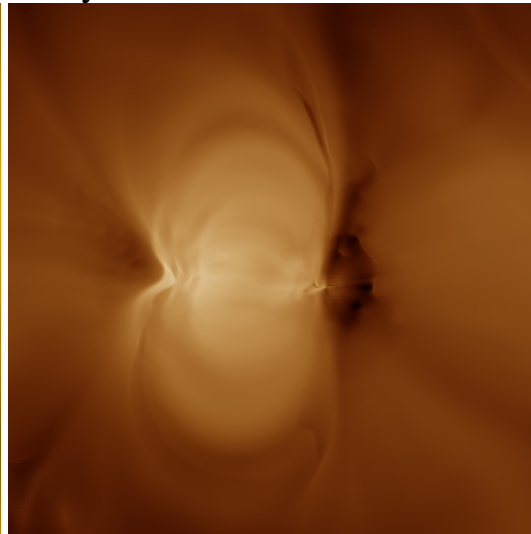
AIA 211 Å Emission



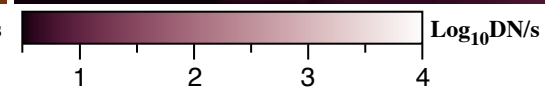
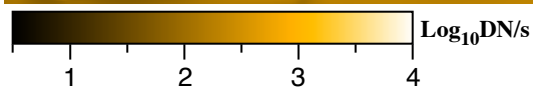
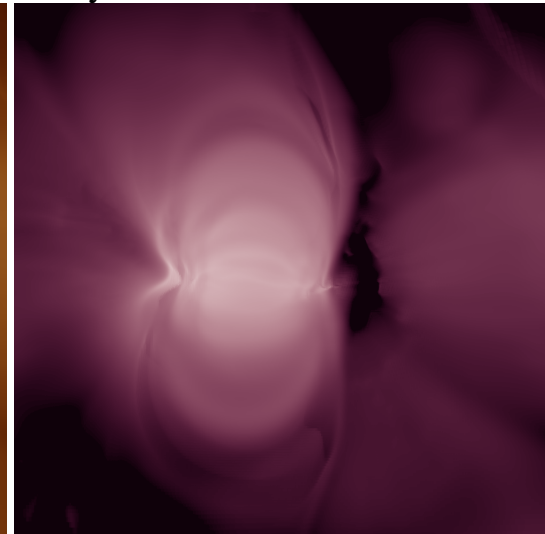
Synthesized 171 Å Emission



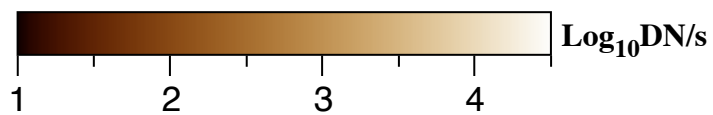
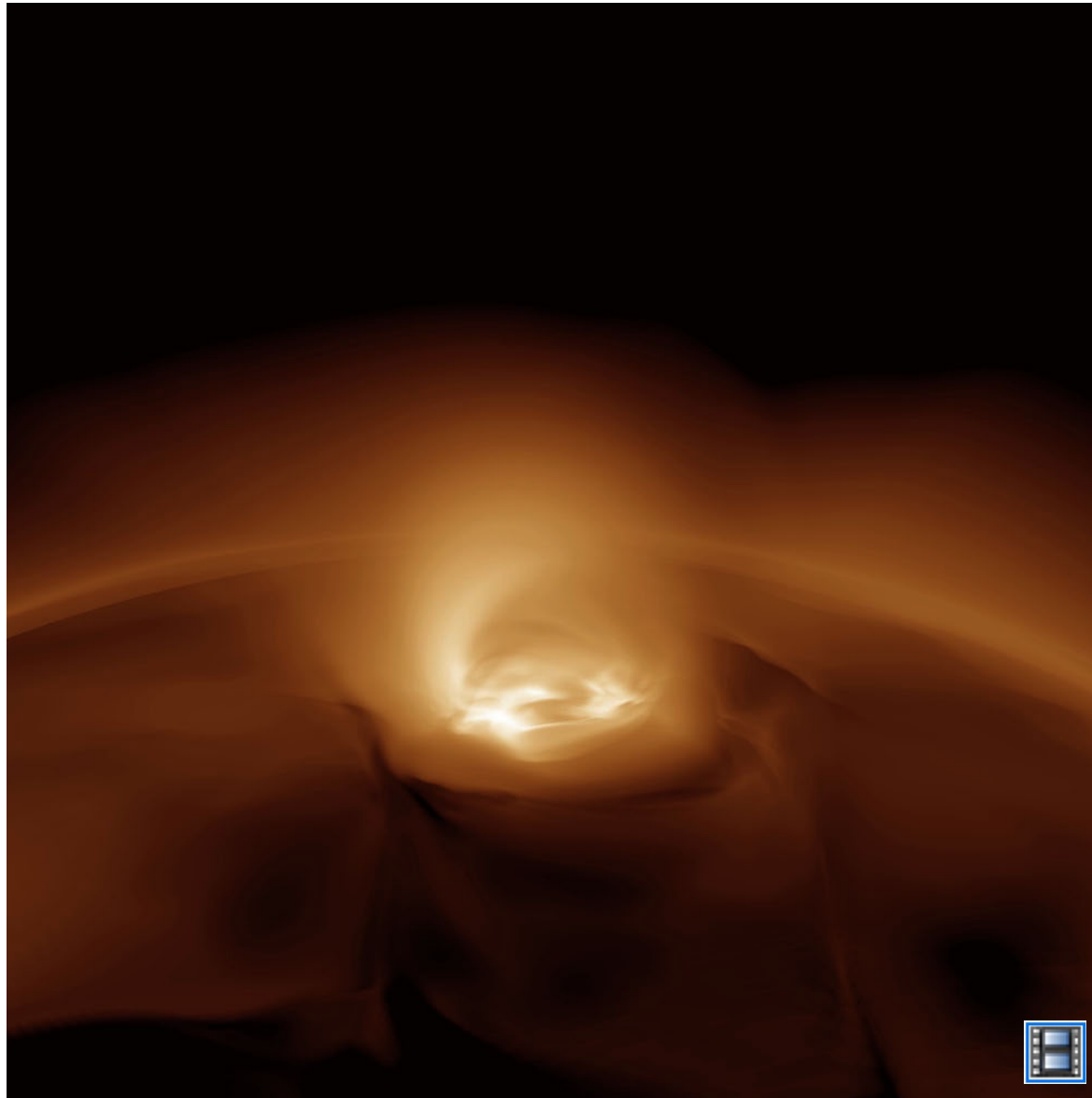
Synthesized 193 Å Emission



Synthesized 211 Å Emission



EUV Emission in AR11339 on November 8, 2011
Empirical Heating: Mok (Rappazzo-Velli), $H \propto B^{1.75} \rho^{0.125} / L^{0.75}$, Low Viscosity
Synthesized 193 Å Emission



AR11339_25