



IAG Service Networks in Google Earth

Carey Noll
CDDIS Manager
NASA GSFC

GGOS Bureau for Networks and Communications
April 22, 2009



A historical map of the world, likely from the 17th or 18th century, showing continents and oceans with Latin labels. The map is centered on the Atlantic Ocean and includes a decorative border with figures.

IAG Service Networks in Google Earth

- The Google Earth layers are available for download from the CDDIS:
 - http://cddis.gsfc.nasa.gov/kml/ids_layer.kml
 - http://cddis.gsfc.nasa.gov/kml/ilrs_layer.kml
 - http://cddis.gsfc.nasa.gov/kml/igs_layer.kml
 - http://cddis.gsfc.nasa.gov/kml/ivs_layer.kml
- To display layers in Google Earth application:
 - Enter above link in browser
 - After download, launch Google Earth application
 - In Google Earth File->Open-><<KML file>>
 - Layer appears in left under Places



An interactive globe interface showing the distribution of sites for the International Laser Ranging Service (ILRS). The globe is centered on North America. A legend in the bottom-left corner identifies the site types: IGS Site (red pin), IVS Site (blue satellite dish), Cooperating VLBI Site (white satellite dish), IDS Site (orange vertical bar), Fixed ILRS Site (green house icon), and Mobile ILRS Site (white house icon). The interface includes a compass, zoom controls, and a legend. Logos for IGS, IVS, and IDS are at the top. The text "International Laser Ranging Service" is at the top left. The text "Data U.S. Navy Image © 2009 DigitalGlobe" is at the bottom center. The text "©2009 Google" is at the bottom right. The coordinates "38°57'33.80" N 95°15'55.74" W" are at the bottom center. The text "Eye alt 6826.45 mi" is at the bottom right.

International Laser Ranging Service

IGS

IVS

IDS

IGS Site

IVS Site

Cooperating VLBI Site

IDS Site

Fixed ILRS Site

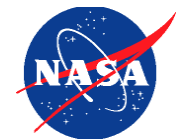
Mobile ILRS Site

Data U.S. Navy
Image © 2009 DigitalGlobe

©2009 Google

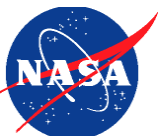
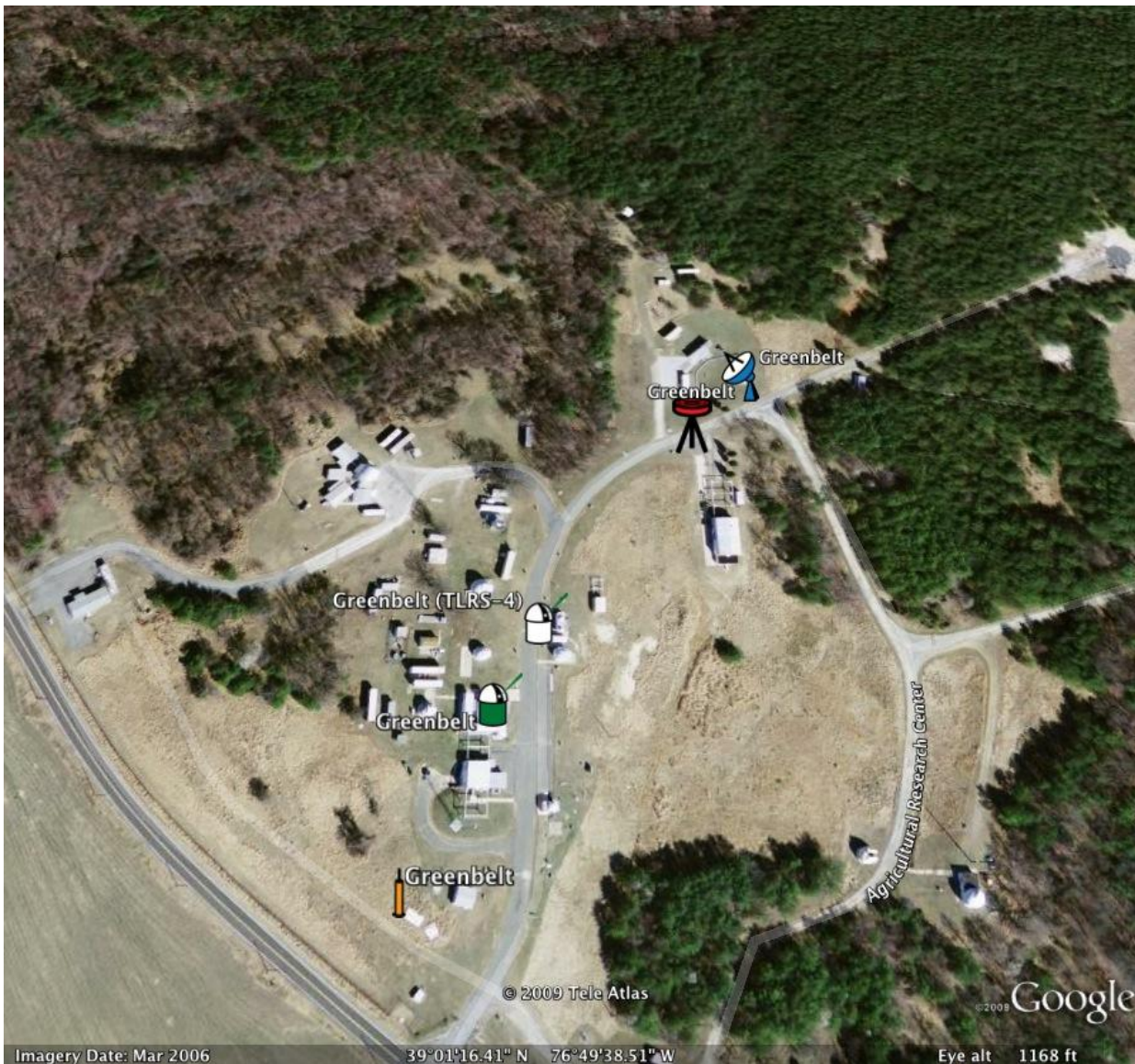
38°57'33.80" N 95°15'55.74" W

Eye alt 6826.45 mi





Zoom in to Greenbelt MD



Imagery Date: Mar 2006

39° 01' 16.41" N 76° 49' 38.51" W

Eye alt 1168 ft

Zoom and Click on Site to View Details

International Laser Ranging Service

IGS

IVS

IDS

Grasse

ILRS Site Code = GRSM
Country = France
Station = 7845
DOMES Number = 10002S002
Plate = Eurasian

Latitude = 43.7546
Longitude = 6.9216
Elevation = 1323.1
XYZ Coordinates = (4581692.1, 556196, 4389355.1)

System = Fixed
Subnetwork = EUROLAS
Log File = [GRSM_site.log.html](#)

Fixed ILRS Site
Mobile ILRS Site

Image © 2009 DigitalGlobe
Imagery Date: Jul 20, 2004
43° 45' 16.61" N 6° 55' 16.70" E
Eye alt 2888 ft

Google

